

Put Your Heart In The Right Place

Psalms 62:8 - CCLI # 4321392

Words & Music: Doug Gregan

E-
♩ = 124 Bass Clef for Bass line only!

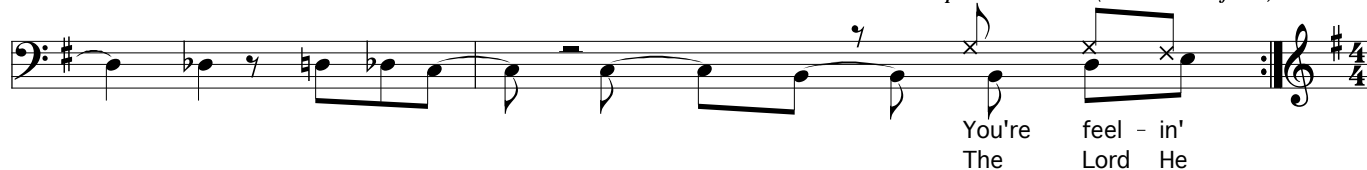
G/D



C#dim

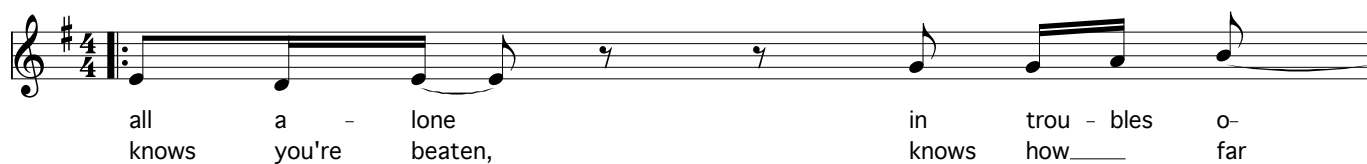
A-7/C

B7
Pick up notes to Verse (in Treble Clef 8vb)



E-7

Solo over Intro, Verse and Chorus changes (no Bridge) in between Verses. Verse 2 is cued.



G/D



C#dim

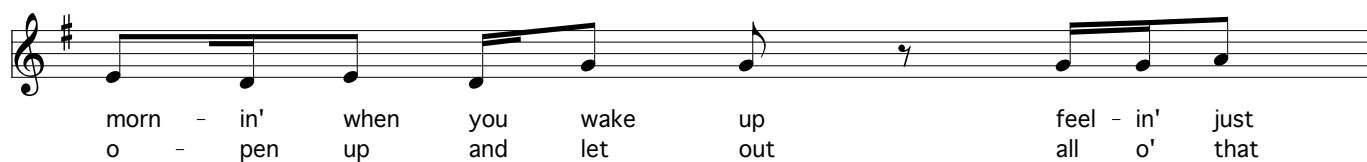


A-7/C

B7



E-7



G/D



like you can't go on, but your heart
hurt you keep in - side 'cause He knows

C#dim

A-7/C

B7

1• Play this on the First Verse!



keeps on reach - in' for some - thing to hold on____ to. And

2• Play this on the Second Verse!



____ what you need, come on and step in - to the Light. And I say

E-7

G/D

Bridge



oh, how you wish so____ bad that

C#dim

A-7/C

B7



some - one would come____ and re - lease you. But,

A-7

E-7

A-7

E-7



don't you know the help you need is there, for

CMaj7

B7



you to take it if you want to? If on - ly you would

Chorus

A-7 E-7 A-7 E-7 A-7

put your heart in____ the right place. O - pen your heart to re - ceive

B7 E- G/D A7/C#

his word._____ Put your heart in____ the right place. I

E- G/D A7/C#

know you'll re - joice when you've fi - nal - ly____ heard,____ yeah!

Repeat Chorus at end as desired (Back to Intro for Solos).